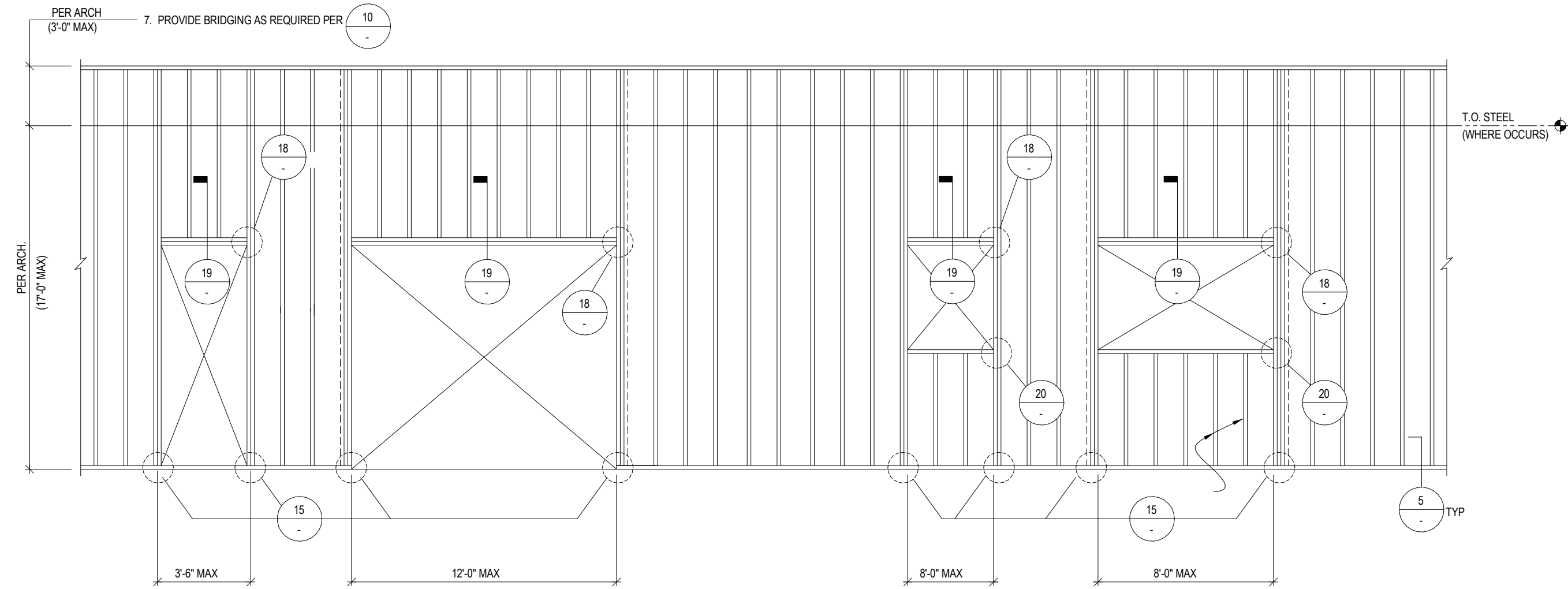
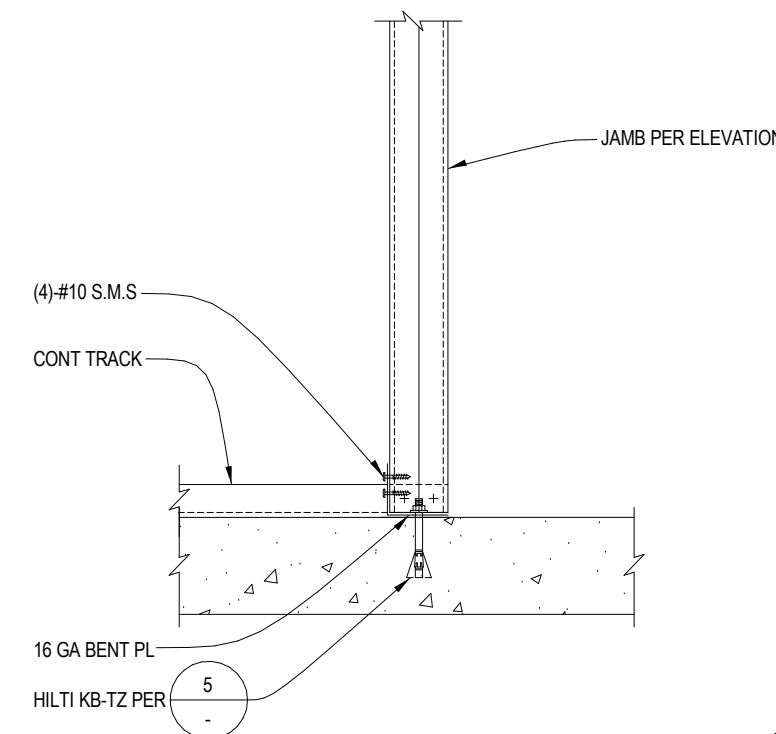


2. EXTERIOR WALL STUD PER ELEVATIONS AND SCHEDULE ON SHEET S2.0
3. TOP AND BOTTOM TRACER SHALL BE 16 GA (54 MILS) THE WIDTH SHALL MATCH WALL STUDS.
4. ALL STUDS SHALL BE "S" STUDS WITH FLANGE STIFFENERS AT OPEN SIDE.
5. WHEN INSTALLING DRILLED-IN ANCHORS
IN EXISTING NON-PRESTRESSED REINFORCED
CONCRETE, USE CARE AND CAUTION TO AVOID CUTTING OR
DAMAGING THE EXISTING REINFORCING BARS. MAINTAIN A
MINIMUM CLEARANCE OF ONE INCH BETWEEN THE REINFORCEMENT
AND THE DRILLED-IN ANCHOR AND/OR POWER-ACTUATED FASTENERS.
6. ALL JAMB STUDS TO BE MINIMUM SIZES & CONNECTIONS
PER $\frac{14}{\phi}$ U.O.N. ON ELEVATIONS
7. CONTRACTORS OPTION: THICKER STUD GAUGE AND/OR LARGER
FLANGE THAN SPECIFIED IS STRUCTURALLY ACCEPTABLE
8. PROVIDE BRIDGING AS REQUIRED PER $\frac{10}{\phi}$

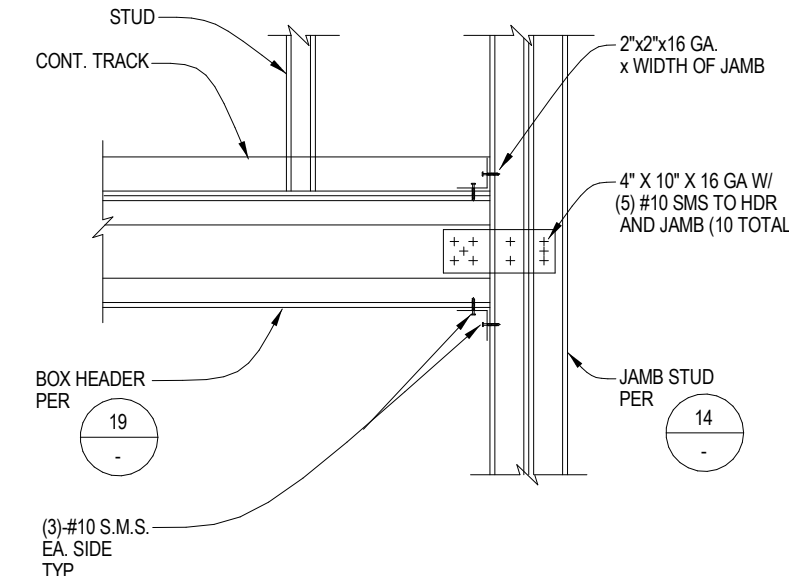
METAL STUD AND TRACK MINIMUM (EFFECTIVE) PERFORMANCE				
STUDS (F _y =50ksi MIN U.O.N.)				
NOTE	MARK	A _t (in ²)	I _{xx} (in ⁴)	S _{xx} (in ³)
4" x 16 GA	6005162-54	0.443	1.098	0.498
4" x 16 GA	6005162-54	0.556	2.860	0.916
6" x 16 GA	8005162-54	0.670	5.600	1.229
TRACK (F _y =50ksi MIN U.O.N.)				
6" x 16 GA	6007150-54	0.509	2.473	0.689
8" x 16 GA	8007150-54	0.622	4.976	0.969



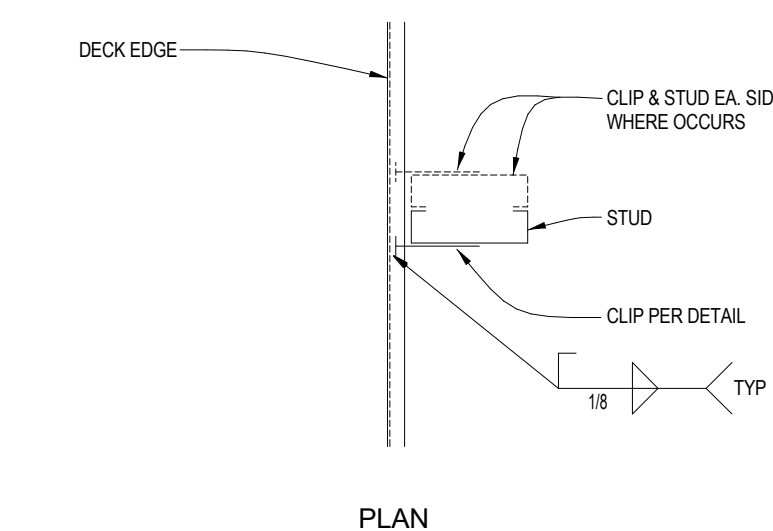
(2



(17)

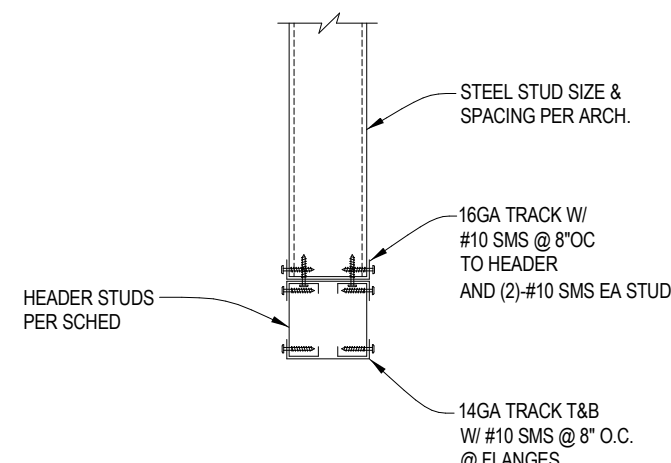


18

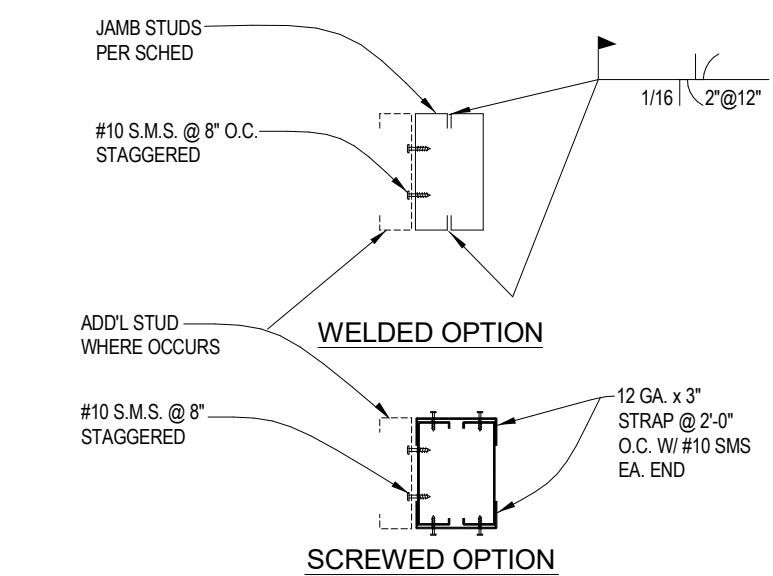


13

HEADER SCHEDULE		
3'-6" MAX OPNG	8'-0" MAX OPNG	12'-0" MAX
(2) 800S162-54	(2) 800S162-54	(2) 800S350-54

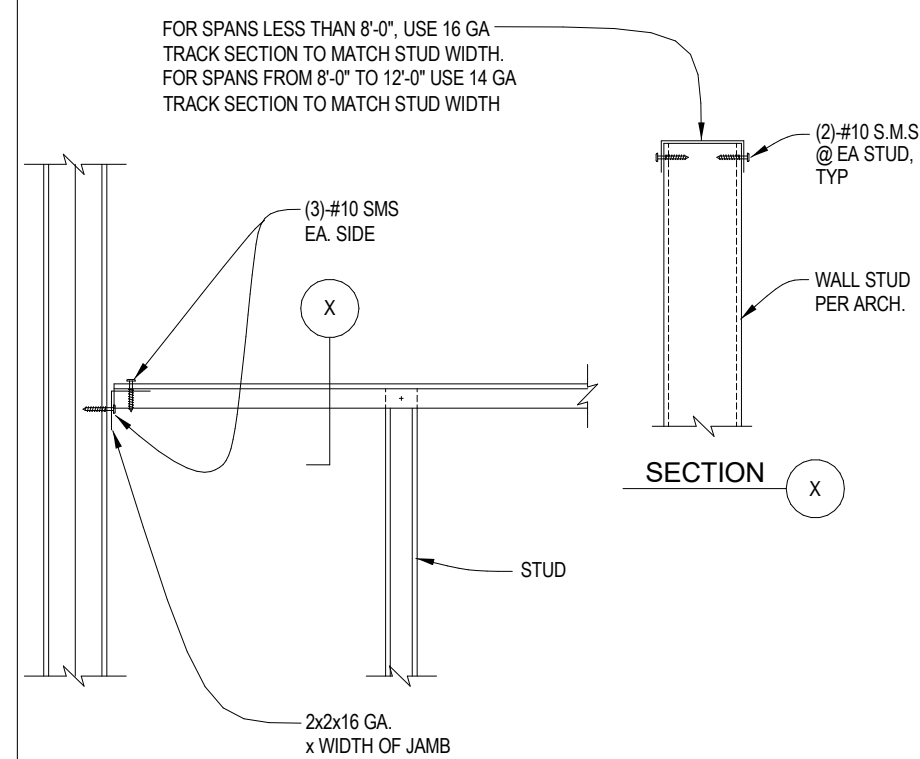


19

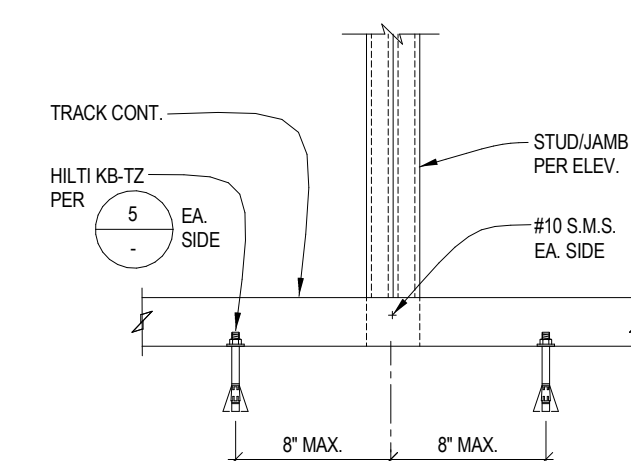


JAMB SCHEDULE		
3'-6" MAX OPNG	8'-0" MAX OPNG	12'-0" MAX
(2) 800S162-54	(2) 800S300-54	(2) 800S350-68
(2) 800S162-54	(2) 800S162-54	(2) 800S200-54

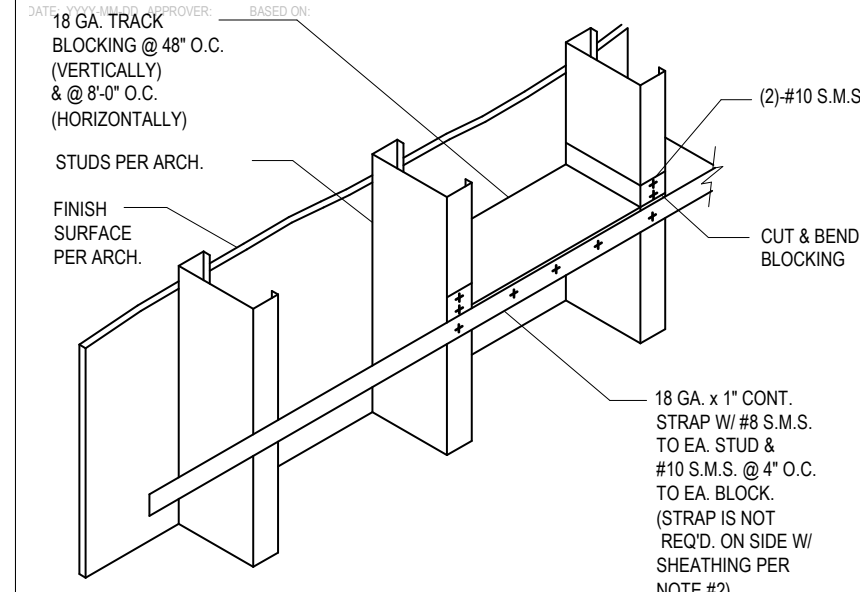
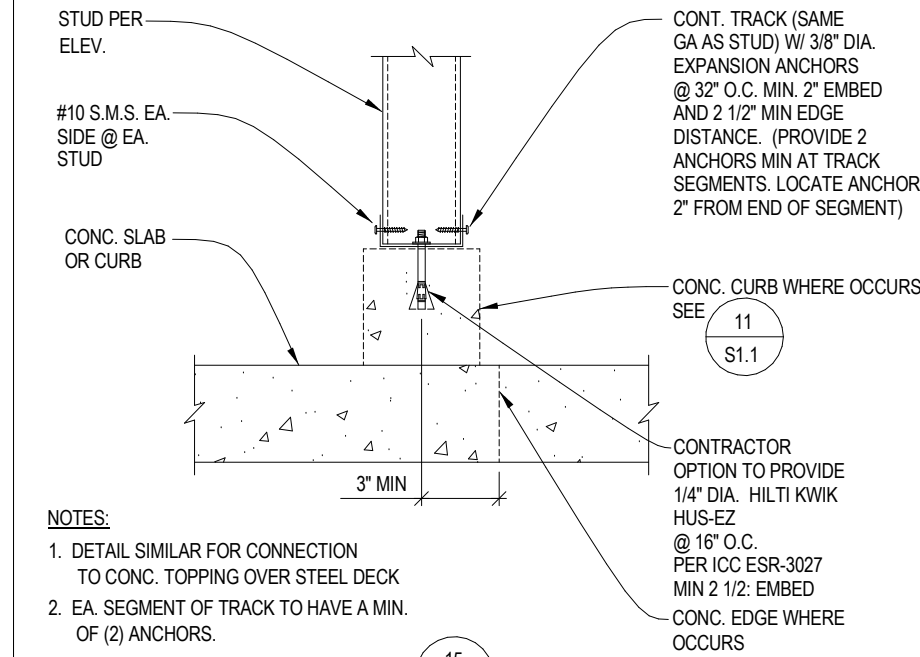
14



(20



(15)


$$(1$$


(5

FOR DSA REVIEW ONLY -
NOT FOR CONSTRUCTION

FOR THE
BOARD OF EDUCATION

BY THE
obr ARCHITECTURE
2419 EL CAJON BLVD, SAN DIEGO, CA 92104

FOUNDATION & FRAMING PLAN

SAN DIEGO UNIFIED SCHOOL DISTRICT
KITCHEN MODIFICATIONS GROUP 6

BELL MIDDLE SCHOOL
620 BRIARWOOD RD.
SAN DIEGO, CA 92139

BID SET

PROJECT NO.	SDUF-002
-------------	----------

DATE	04/12/25
------	----------

REVISIONS	SHEET NO.
-----------	-----------

S1.2